

Advanced Turbine Support

501F Row 2 Blade Failures

PURPOSE

To inform users of the potential for row two turbine blade failures on the Siemens Westinghouse 501F gas turbine.

UNIT TYPE

This newsletter addresses the 501F gas turbines.

HISTORY

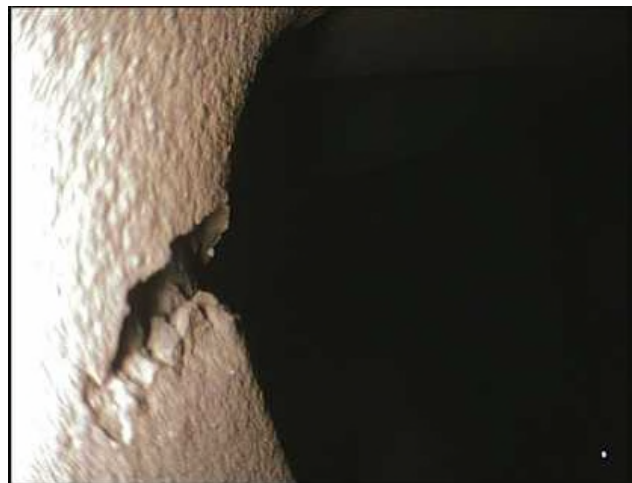
We are aware of two row two turbine blade failures that appear to have initiated from cracks in the leading and or trailing edge. This type of failure will cause significant collateral damage to the turbines.

RECOMMENDATION

Users should have Advanced Turbine Support, Inc. perform a close up visual inspection of the leading and trailing edges of the row two blades as soon as possible. This testing can identify very small cracks in the leading and or trailing edges of the blades before the liberation of the blade. This inspection requires approximately 14 hours to complete. During this inspection we will need the turbine borescope plugs removed and have the ability to rotate the unit slowly so we can inspect each blade.



This photograph shows a crack in the trailing edge of a row two blade. This unit had 7658 Total Hours at the time of the inspection.



This photograph shows a crack in the trailing edge of a row two blade. This unit had 22135 Total Hours at the time of the inspection.