

## Advanced Turbine Support

### General Electric 7EA/7FA: Compressor “Clash” contact between stator vanes and rotor blades.

#### PURPOSE

To inform users of “clash” contact identified between the R-1 blades and the S-1 vanes on the 7EA’s and the R-2 or R-3 blades and the S-2 or S-3 vanes on the 7FA’s.

#### UNIT TYPE

MS7001EA and FA

#### HISTORY

We identified contact between the trailing edge of the R-1 rotor blades and the leading edge of the S-1 stator vanes on numerous 7EA’s.

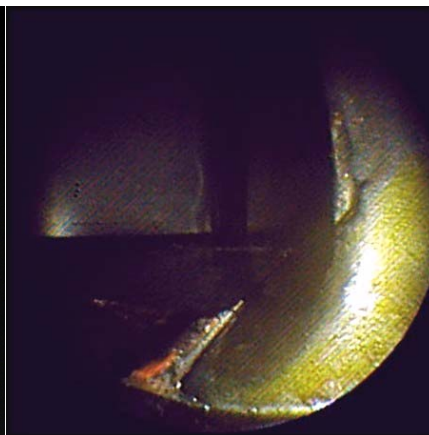
We identified contact between the trailing edge of the R-2 rotor blades and the leading edge of the S-2 stator vanes on several 7FA’s.

#### RECOMMENDATION

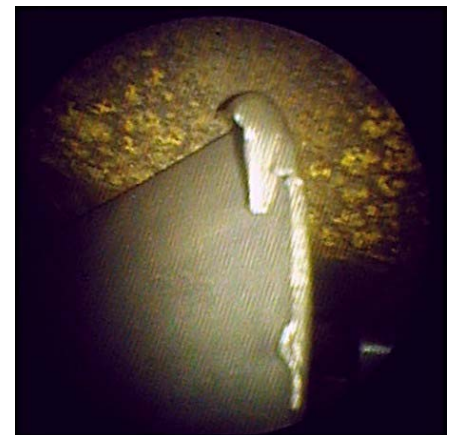
Perform an inspection of these areas at the earliest opportunity and during all borescope inspections. These areas can be easy to overlook during a regular borescope inspection since it requires inspecting the platforms of the blades and tips of the vanes. In the lower half of the unit this area will be a vane length away from the scope tip. On the 7EA this area can be visually inspected using a flashlight. If contact is made on a 7EA we recommend performing regular remote dye penetrant examinations of the blade platforms to identify cracks that may occur due to the contact.



7EA S-1 Blade Contact



7FA R-2 Blade Contact



7FA S-2 Vane Contact