

ADVANCED TURBINE SUPPORT

MS7001FA Stage S-0 to S-4 Shim Migration

PURPOSE

To inform users of potential S-0 through S-4 shim migration.

UNIT TYPE

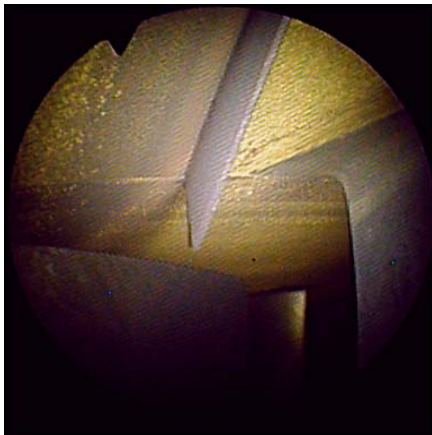
This newsletter addresses the MS7001FA gas turbines.

HISTORY

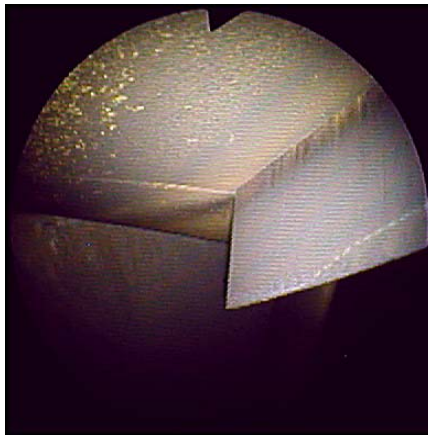
The shims used in the 7FA compressors are held in place using a hook-fit design. When the hook-fit breaks it can allow the migration of the stator vane shims. We have identified protruding shims and missing shims on numerous 7FA compressors. These shims have caused damage by going through the units and there is a concern that the protruding shim(s) can cause airflow disruption.

RECOMMENDATION

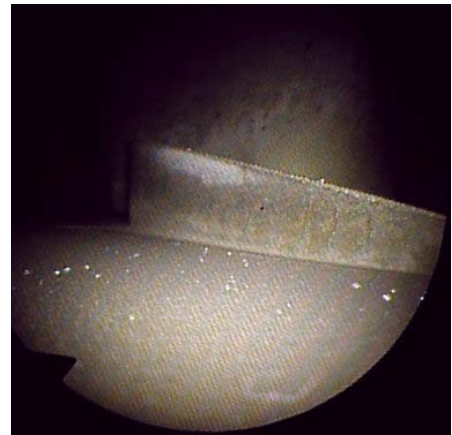
Users should have ATS perform shim mapping of the stage S-0 through S-4 shims to determine if any are missing or if the hook fit has failed allowing the shims to protrude up into the airflow. This inspection documents the number of shims at all twenty locations and whether or not there is shim migration occurring. Inspection duration is estimated at six hours per unit.



This photograph shows S-0 shim migration.



This view shows S-1 shim migration.



This view shows another S-1 shim protruding out of the compressor case.