

***ADVANCED TURBINE SUPPORT***

**MS7001FA THRUST BEARING DISTRESS**

**PURPOSE**

To inform users of potential thrust bearing distress.

**UNIT TYPE**

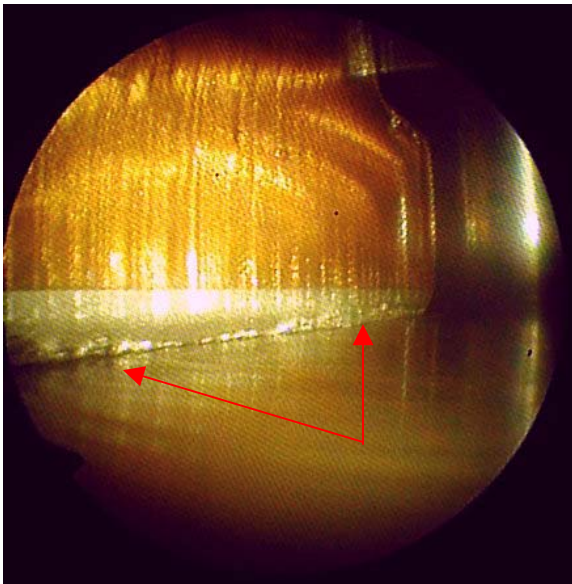
MS7001FA gas turbines.

**HISTORY**

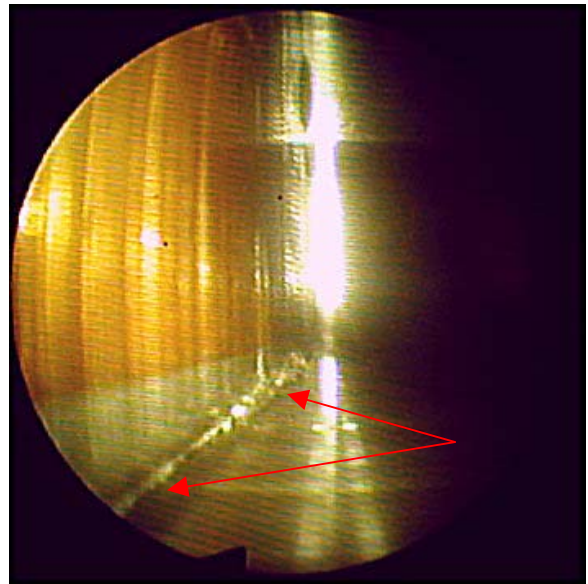
We have identified bearing distress on the Waukesha thrust bearing.

**RECOMMENDATION**

Perform a remote visual inspection of the active and inactive side of the thrust bearing. The bearing shown below was replaced. This service can be performed during the borescope inspection.



This view is showing rolled babbitt material on one of the thrust bearing shoes.



This view is showing rolled babbitt material on one of the thrust bearing shoes.