

***ADVANCED TURBINE SUPPORT***

**MS7001FA STAGE 17-S VANE DISTRESS**

**PURPOSE**

To inform users of potential blade vane distress that has lead to vane failures at locations other than the counterbore locations.

**UNIT TYPE**

MS7001FA gas turbines.

**HISTORY**

We have identified stage 17-S vane failures at locations other than the counterbore locations. In two cases these failures were on units that had the counterbore modifications.

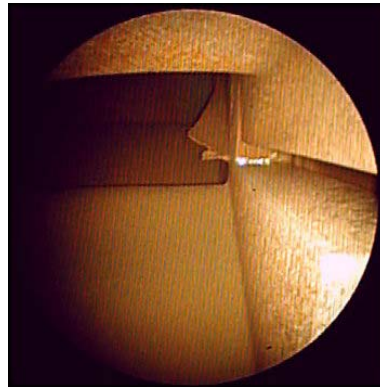
**RECOMMENDATION**

Perform a remote visual inspection of every stage 17-S stator vane. We are also currently assisting in the development of a specialized videoscope that will allow us to perform remote fluorescent dye penetrant testing of the stator vanes. In our experience the majority of the stator vane failures have occurred between the 12:00 to 3:00 o'clock positions on the unit. Initially the remote penetrant testing will be limited to this area.

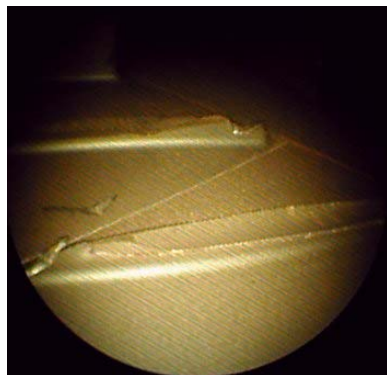
This view is showing a stage 17-S vane failure.



This view is showing another stage 17-S vane failure.



This view is showing two stage 17-S vane platforms.



This view is showing a stage 17-S vane being tested remotely using fluorescent dye penetrant.

