

***ADVANCED TURBINE SUPPORT***

**MS7001FA STAGE 14 ROTOR BLADE TIP FAILURE**

**PURPOSE**

To inform users of potential stage 14-R tip failures.

**UNIT TYPE**

MS7001FA gas turbines.

**HISTORY**

On a number of units the stage 14-R rotor blades are experiencing tip failures similar to those occurring on other stages of the compressor. These appear to be caused by the rotor blades contacting the compressor case. This causes the metal along the tip to overheat and become brittle. During one of our inspections we identified as many as twenty-five tip failures on one 7FA compressor.

**RECOMMENDATION**

Perform a borescope inspection of every stage 14 rotor blade to assess if tip failures have occurred or if rolled metal is present on the blade tips.

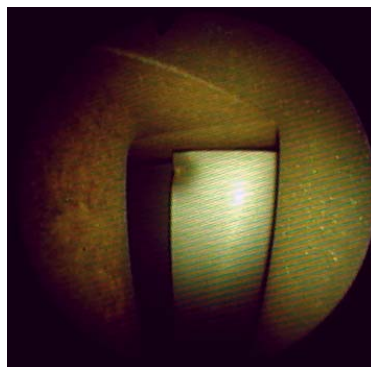
This is a stage 14-R tip failure



This is another stage 14-R tip failure



This is collateral impact damage on a stage 14-rotor blade.



This is collateral impact damage on a stage 16-rotor blade.

