

ADVANCED TURBINE SUPPORT

**MS7001FA AFT-TRANSITION PIECE MOUNTING BRACKETS
AND IMPINGEMENT SLEEVE INSPECTION RECOMMENDATIONS**

PURPOSE

To inform users of potential transition piece impingement sleeve and mounting bracket crack.

UNIT TYPE

This newsletter addresses the MS7001FA gas turbine with both the standard and extended life hardware.

HISTORY

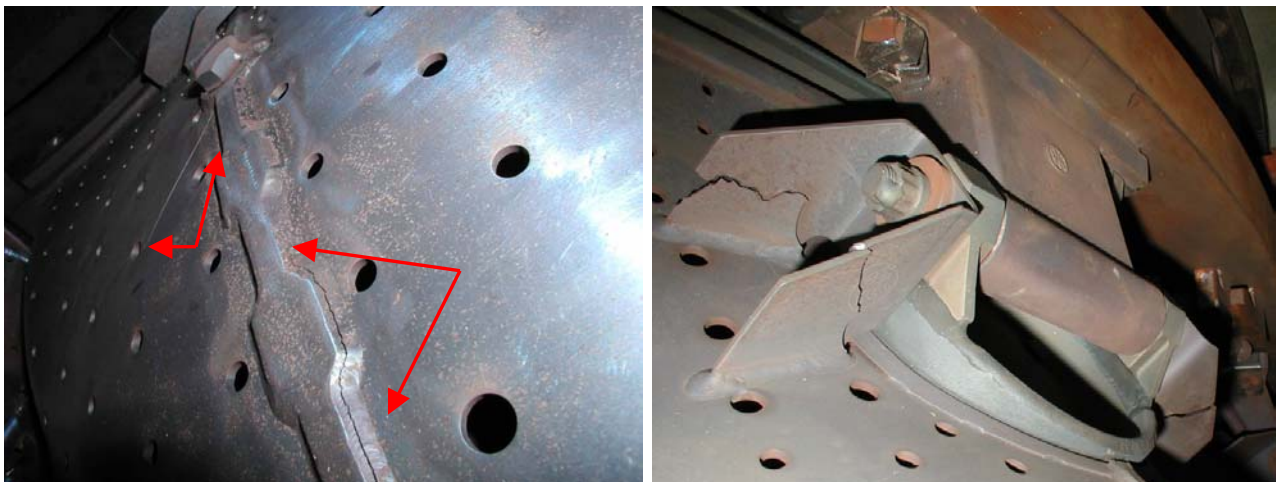
We have identified cracked impingement sleeve and brackets on units throughout the United States. In some cases there has been slight movement of the transition piece.

Recent findings have identified significant cracking on the impingement sleeve on the inner side, opposite from the aft-mounting brackets. In some cases pieces of the impingement sleeve were missing.

Our inspections have shown cracking on units with as few as 107 total starts and 1100 hours.

RECOMMENDATION

Perform a borescope inspection of all fourteen aft-mounting brackets and the impingement sleeves at the earliest convenience.



These views are showing multiple cracks on the interior side of a transition piece and cracks in the aft-transition piece mounting brackets.